

# STICKING UP FOR PICKING UP

A GUIDE TO ENCOURAGING PROPER  
DISPOSAL OF DOG WASTE IN PUBLIC SPACES



The Smart Solution to Dog Pollution.



While some consider it a “low-risk behavior,” dog waste left on the ground causes damaging effects on people and the environment.



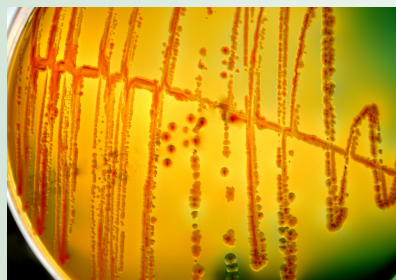
## "It's fertilizer"



In its raw form, dog waste can be toxic to soil. While wildlife feces can spread seeds and provide nutrients to an ecosystem, dog waste introduces foreign nutrients into an environment from pet food.<sup>1</sup>



## "It'll break down on it's own"



It may carry harmful bacteria like E. Coli, Salmonella, and Campylobacteria that pose a significant pollution risk to the environment.<sup>2</sup> Up to 50% of dog waste may contain parasites<sup>3</sup> like worms, coccidia, or giardia, which pose serious health risks to humans and pets.



## "It's too much work to pick up"



Not picking up causes WAY more work. It's a significant food source for rodents, luring mice and rats to feast on undigested food bits in the waste. It can also cause algae overgrowth that kills fish and wildlife, while encouraging growth of invasive plants<sup>1</sup>.



### The DOGIPOT Solution:

- DOGIPOT is a pioneer of dog waste removal with the best waste bags in the business.
- When our bags are present in parks and public spaces pick-up rates increase.
- The DOGIPOT bag is the perfect balance of dependability and value.

# How to encourage dog waste pick up and disposal in your public space



## Maximize Locations of Receptacles

Even people who pick up responsibly don't like to carry filled waste bags for long distances and may end up dropping the bag if a receptacle isn't found within a short distance.



## Ensure Waste Bag Dispensers are Stocked

Lack of resources (ie. bags or bins) was the number one reason (56% of respondents) cited for why people don't pick up waste.<sup>4</sup> Remember, bags should be thick enough to withstand environmental exposure and pickup effectively without adding excess materials to the waste stream.



## Promote the Benefits of Pick Up

Messages focused on courtesy and the fact that no one wants to step in dog waste were shown to positively affect dog owner behavior in one study.<sup>4</sup> Use social media, handouts, public campaigns, and site-based messaging to remind users that picking up maintains aesthetic appeal of public areas, is courteous to others, keeps shoes clean, prevents odors, promotes health, and contributes to reduced environmental pollution.



## Utilize Outreach and Education

A study<sup>5</sup> in Kirkland, WA, showed that un-scooped poop decreased by 80% as a result of a campaign to show the cumulative effect of dog waste (yellow flags were placed on every unscooped poo for three weeks in three parks). Idea: Asking people to sign a pledge form committing to cleaning up after their pet every time is a gentle but effective way to establish a commitment to the cause.

**Whatever you call it, please pick it up.**

أنبوب الكلب  
Morocco

hundakúkur  
Iceland

kinyesi cha mbwa  
Kenya



dog poop  
USA

kutya kaki  
Hungary

crotte de chien  
France





<sup>1</sup> [HTTPS://LNT.ORG/WILDLIFE-POOP-VERSUS-DOG-POOP-EXPLAINED/](https://lnt.org/wildlife-poop-versus-dog-poop-explained/)

<sup>2</sup> RETRIEVED FROM [HTTPS://WWW.COLORADO.EDU/TODAY/2011/08/18/NEW-CU-BOULDER-STUDY-REVEALS-BACTERIA-DOG-FECES-OUTDOOR-AIR-URBANIZED-AREAS](https://www.colorado.edu/today/2011/08/18/new-cu-boulder-study-reveals-bacteria-dog-feces-outdoor-air-urbanized-areas)

<sup>3</sup> BISHOP, G. & DEBESS, E. DETECTION OF PARASITES IN CANINE FECES AT THREE OFF-LEASH DOG PARKS IN PORTLAND, OREGON 2014, VETERINARY PARASITOLOGY: REGIONAL STUDIES AND REPORTS, VOLUME 22, 2020, 100494, ISSN 2405-9390, [HTTPS://DOI.ORG/10.1016/J.VPRSR.2020.100494](https://doi.org/10.1016/j.vprsr.2020.100494).

<sup>4</sup> TYPHINA, E. & CHANGMIN, Y. (2014). MANAGING DOG WASTE: CAMPAIGN INSIGHTS FROM THE HEALTH BELIEF MODEL. APPLIED ENVIRONMENTAL EDUCATION & COMMUNICATION, 13(2), DOI:10.1080/1533015X.2014.944247

<sup>5</sup> [HTTPS://WWW.KIRKLANDWA.GOV/FILES/SHAREDASSETS/PUBLIC/PUBLIC-WORKS/2020-KCD-PET-WASTE-FINAL-REPORT.PDF](https://www.kirklandwa.gov/files/sharedassets/public/public-works/2020-KCD-PET-WASTE-FINAL-REPORT.PDF)